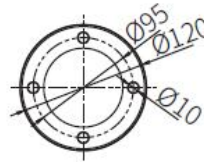
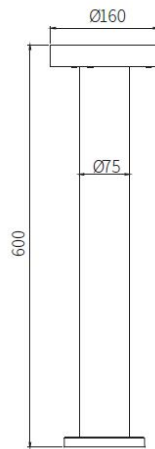
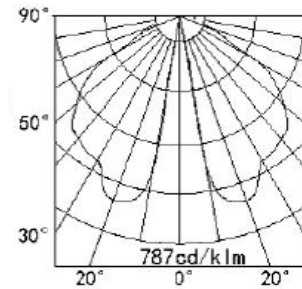


TECHNICAL SHEET



- Die-cast aluminium housing
- Pre-treated before powder coating ensuring high corrosion resistance
- Extruded aluminium column
- Single cable entry
- Stainless steel fasteners in grade 304 with zinc flake coating (ZFC)
- Durable silicone rubber gasket
- Clear toughened glass
- High-efficiency PMMA lens
- Integral control gear



Brand/Model	BOLLARD LIGHT 10W
Country of Origin	P.R.C
Description	Specification Grade Round LED Bollard Luminaire. Luminaire made of aluminum alloy body and stainless steel screws. 10 Watt LED, IP65 in 3000K Warm White. Integral Non Dim LED Driver. Overall height 600mm
Materials	Die-Casting Aluminum body, Clear glass, White/Black finish
Compliance	CE
Protection Classification	IP65
Lamp	10W LED Lumen: >950lm CRI: >80 Colour Temperature: 3000K (Warm White) Lifespan: 50,000hours Beam angle: 140D Luminaire Efficacy: 95lm/w
Control Gear	Integrated Non Dim LED Driver
Mounting Method	Ground Mounted
Dimension	160 x 120 x 600 mm (Diameter 1 x Diameter 2 x Height)